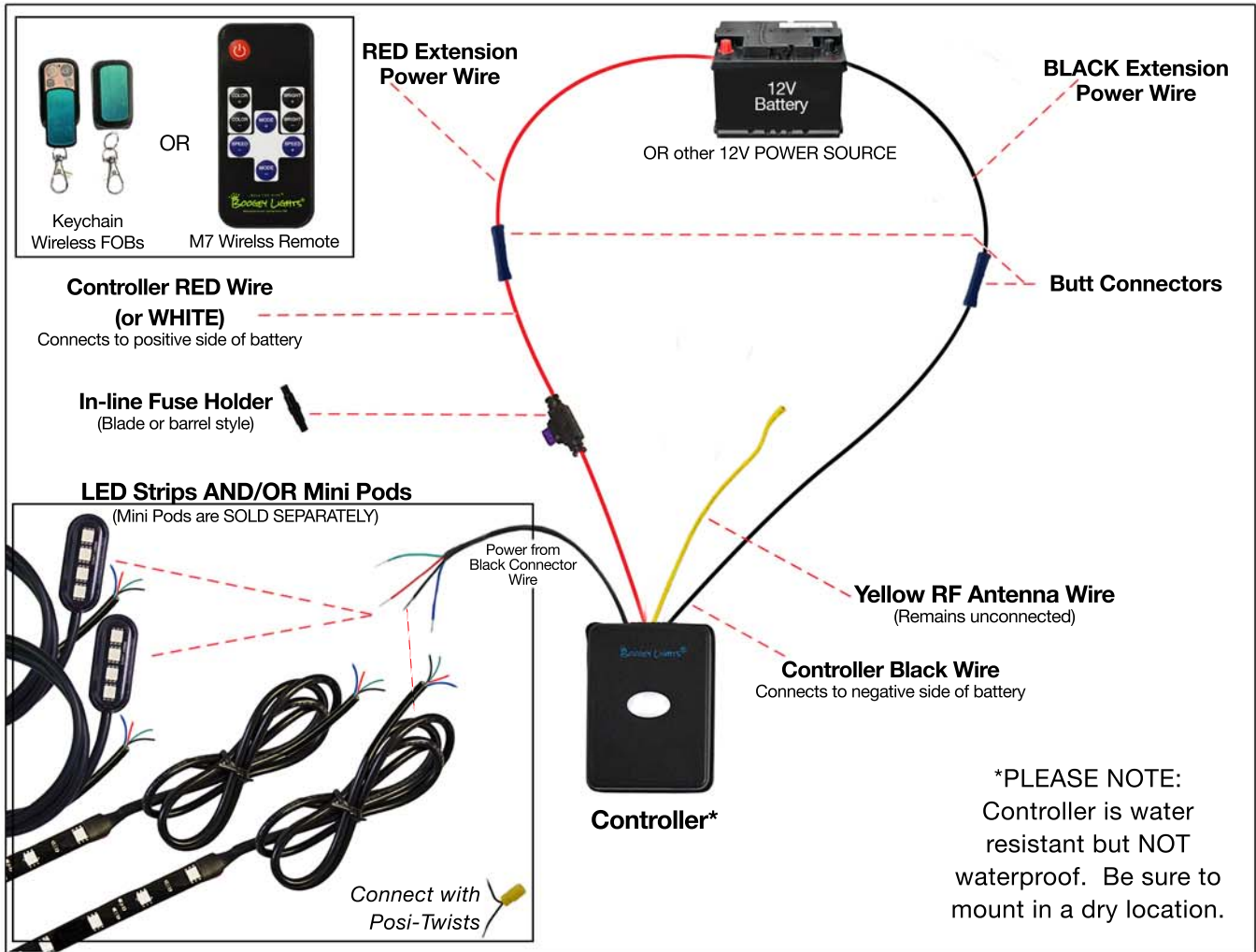



Multi-Color Wiring Diagram with Remote Control



LED Strip Blue, Red, Green & Black Wires. Connects w/ Red, Green, Blue and Black Wires from Controller. Connect with a Posi-Twist. Each wire represents its respective light color. Black is the Ground wire.

 **Scotchloks (red)** - If Included - Can be used to connect to existing vehicle wiring if desired.